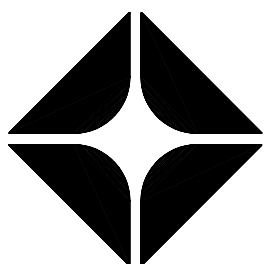


CLIENT



PINNACLE REAL ESTATE HOLDINGS, INC.
RIVERSIDE COUNTY TRAVEL ZONE LLC
COO & CO-FOUNDER

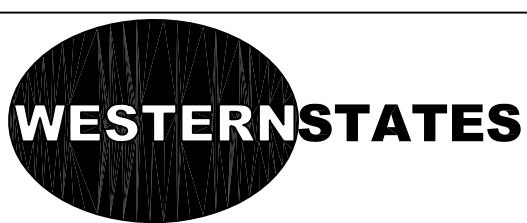
BRAND



ARCO

BP WEST COAST PRODUCTS, LLC

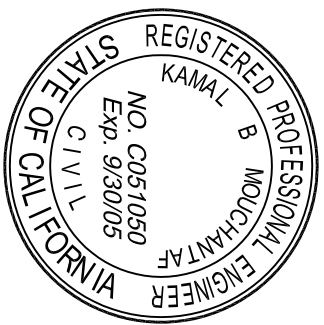
CONSUMERS



733 N. MAIN ST.
ORANGE, CA 92686
714/ 769-2000
714/ 769-2002 Fax
www.wsecinc.com
A "Design/ Build" Co.

NO.	DATE	REVISION DESCRIPTION
△	1-17-03	REVISED SUBMITTAL
△	4-19-04	REVISED THE PLAN CHECK REVISIONS SUBMITTAL
△	9-01-04	REVISED THE PLAN CHECK REVISIONS SUBMITTAL
△	9-10-04	REVISED THE PLAN CHECK REVISIONS SUBMITTAL
△	9-27-04	REVISED THE PLAN CHECK REVISIONS SUBMITTAL
△		REVISED THE PLAN CHECK REVISIONS SUBMITTAL

SEAL



CONFIDENTIALITY STATEMENT: THE REQUESTOR OF THESE MATERIALS UNDERSTANDS THAT COPYRIGHT IN THE MATERIALS IS OWNED BY BP, AND ALSO THAT THE MATERIALS CONTAIN PROPRIETARY AND CONFIDENTIAL INFORMATION. THE REQUESTOR AGREES TO RETAIN THESE MATERIALS IN STRICT CONFIDENCE AND AGREES NOT TO DISCLOSE THESE MATERIALS TO ANY OTHER INDIVIDUAL OR FIRM, NOR TO REPRODUCE OR TRANSMIT THESE MATERIALS IN ANY MANNER. THE REQUESTOR AGREES TO USE THE MATERIALS ONLY FOR THE LIMITED PURPOSE FOR WHICH BP HAS MADE THE MATERIALS AVAILABLE. IF THE REQUESTOR WISHES TO OBTAIN ADDITIONAL MATERIALS, OR IF THE REQUESTOR WISHES TO REPRODUCE OR TRANSMIT THE MATERIALS TO BE OTHER THAN FOR COMPLETION OF THE REQUESTED PROJECT, THE REQUESTOR MUST FIRST OBTAIN WRITTEN APPROVAL FROM BP. IF APPROVAL IS GRANTED, THE REQUESTOR AGREES TO SIGN A WRITTEN CONFIDENTIALITY AGREEMENT WITH BP. IF APPROVAL IS NOT GRANTED, THE REQUESTOR AGREES TO DESTROY THE MATERIALS AND TO RETURN THEM TO BP. IF APPROVAL IS GRANTED, THE REQUESTOR AGREES TO SIGN A WRITTEN CONFIDENTIALITY AGREEMENT WITH BP. IF APPROVAL IS NOT GRANTED, THE REQUESTOR AGREES TO DESTROY THE MATERIALS AND TO RETURN THEM TO BP. IF APPROVAL IS GRANTED, THE REQUESTOR AGREES TO SIGN A WRITTEN CONFIDENTIALITY AGREEMENT WITH BP.

DEVELOPMENT INFORMATION

NEW BUILD (STICK)

3600 SERIES AM/PM

TO GO DELI

SITE ADDRESS:

23261 CAJALCO EXWY.
@ HARVILL AVENUE
PERRIS, California 92571

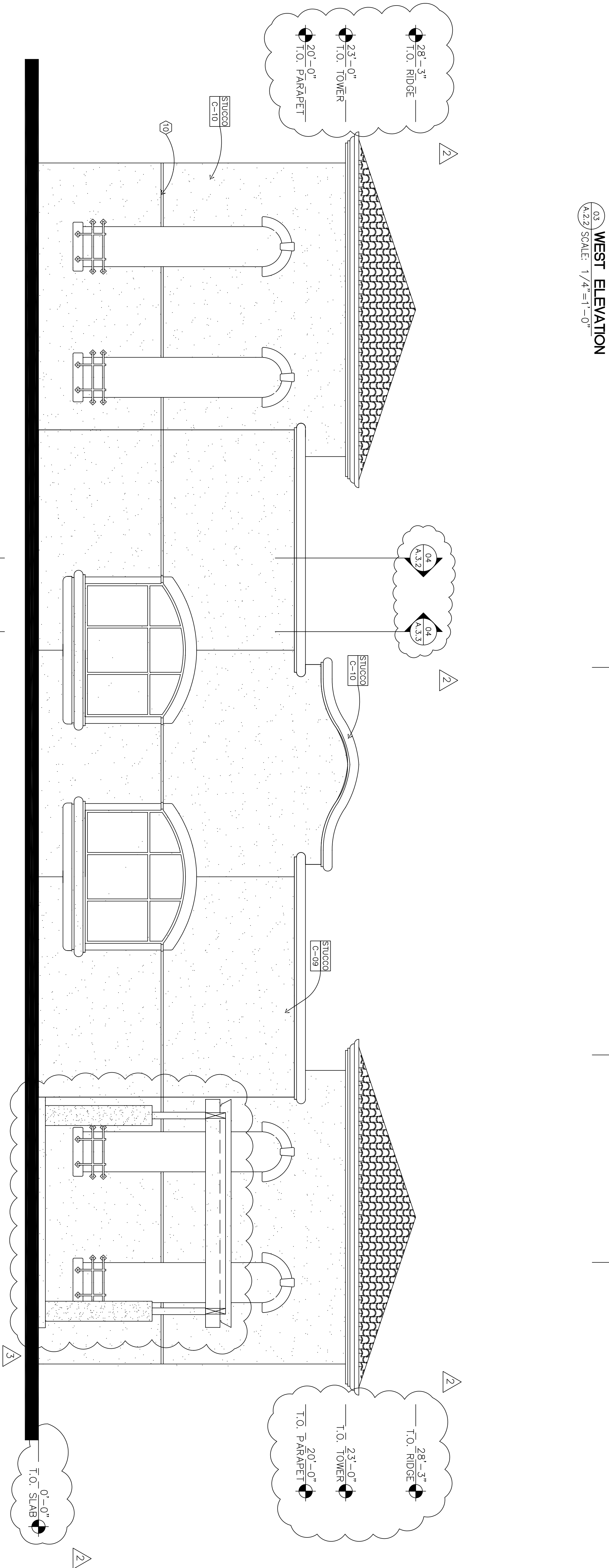
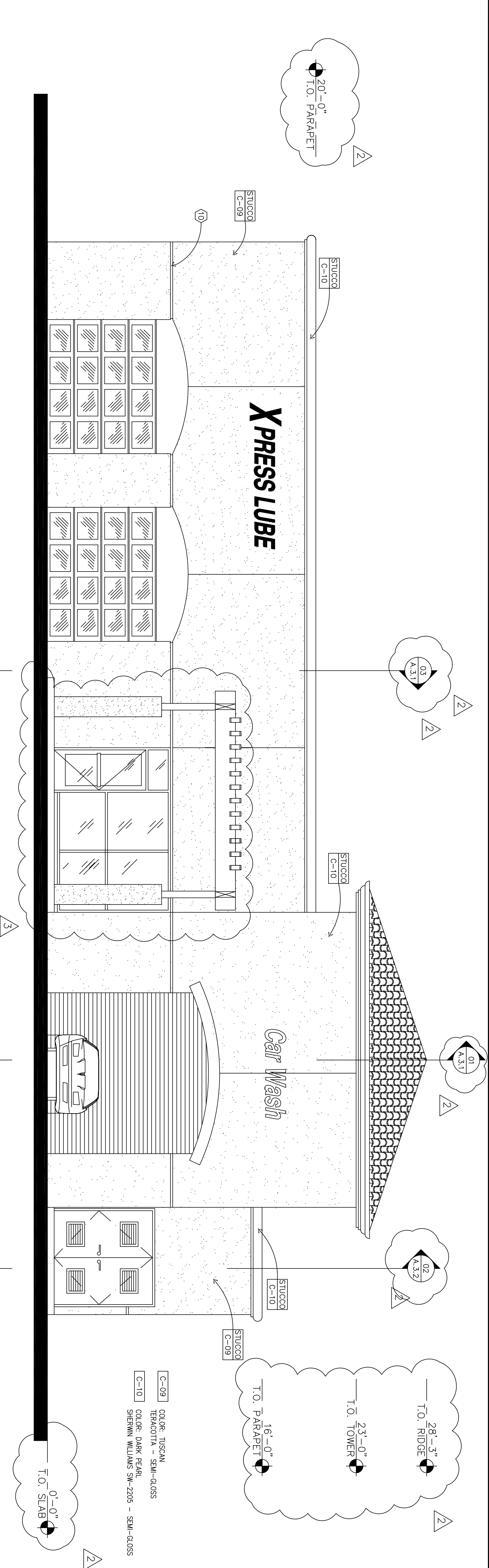
DESIGNED BY:	-	ALLIANCE Z&DM:
CHECKED BY:	-	BP REPM:
DRAWN BY:	-	ALLIANCE PM:
VERSION:	V01	PROJECT NO:

DRAWING TITLE

**BUILDING # 3
CAR WASH
ELEVATIONS**

SHEET NO.

04 NORTH ELEVATION
A.2.2 SCALE: 1/4"=1'-0"



DOFO
A-2.2