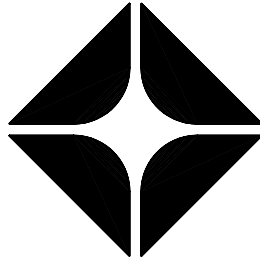


CLIENT:



PRIMEC REAL ESTATE HOLDINGS, INC.
RIVERSIDE COUNTY TRAVEL CENTER, LLC
CEO & CO-OWNER

BRAND:



ARCO

BP WEST COAST PRODUCTS, LLC
CONSULTANT:

WESTERNSTATES
Engineering & Construction, Inc.
733 N. MAIN ST.
ORANGE, CA 92666
714/ 769-2000
714/ 769-2002 Fax
www.wseinc.com
A "Design/Build" Co.

NO.	DATE	REVISION DESCRIPTION
1	11-17-03	BUILDING SUBMITTAL
2	11-17-03	REVISION FOR PLUMBING
3	11-17-03	REVISION FOR ELECTRICAL
4	11-17-03	REVISION FOR MECHANICAL
5	11-17-03	REVISION FOR FINISHES
6	11-17-03	REVISION FOR FURNITURE
7	11-17-03	REVISION FOR SIGNAGE
8	11-17-03	REVISION FOR LANDSCAPE
9	11-17-03	REVISION FOR PAVING
10	11-17-03	REVISION FOR FENCE
11	11-17-03	REVISION FOR LIGHTING
12	11-17-03	REVISION FOR SECURITY
13	11-17-03	REVISION FOR ACCESSIBILITY
14	11-17-03	REVISION FOR SAFETY
15	11-17-03	REVISION FOR COMPLIANCE

NO.	DATE	REVISION DESCRIPTION
1	11-17-03	BUILDING SUBMITTAL
2	11-17-03	REVISION FOR PLUMBING
3	11-17-03	REVISION FOR ELECTRICAL
4	11-17-03	REVISION FOR MECHANICAL
5	11-17-03	REVISION FOR FINISHES
6	11-17-03	REVISION FOR FURNITURE
7	11-17-03	REVISION FOR SIGNAGE
8	11-17-03	REVISION FOR LANDSCAPE
9	11-17-03	REVISION FOR PAVING
10	11-17-03	REVISION FOR FENCE
11	11-17-03	REVISION FOR LIGHTING
12	11-17-03	REVISION FOR SECURITY
13	11-17-03	REVISION FOR ACCESSIBILITY
14	11-17-03	REVISION FOR SAFETY
15	11-17-03	REVISION FOR COMPLIANCE



CONFIDENTIALITY STATEMENT:
THE INFORMATION CONTAINED HEREIN IS THE PROPERTY OF WESTERNSTATES ENGINEERING & CONSTRUCTION, INC. AND IS NOT TO BE DISCLOSED OR REPRODUCED IN ANY MANNER WITHOUT THE WRITTEN PERMISSION OF WESTERNSTATES ENGINEERING & CONSTRUCTION, INC. THIS INFORMATION IS TO BE USED ONLY FOR THE PROJECT AND SITE SPECIFICALLY IDENTIFIED HEREIN. ANY OTHER USE OF THIS INFORMATION WITHOUT THE WRITTEN PERMISSION OF WESTERNSTATES ENGINEERING & CONSTRUCTION, INC. IS STRICTLY PROHIBITED. ANY VIOLATION OF THIS STATEMENT SHALL BE CONSIDERED A BREACH OF CONTRACT AND SUBJECT TO LEGAL ACTION.

NEW BUILD (STICK)
3600 SERIES AM/PM
CENTER CASHIER
TO GO DELI

SITE ADDRESS:
23261 CAVALCO EXWY.
@ MARILL AVENUE
FERRIS, CALIFORNIA 92511

DESIGNED BY: -
CHECKED BY: -
DRAWN BY: -
VERSION: V01
11.17.03
DRAWING TITLE:
BUILDING # 3
INTERIOR
ELEVATIONS

SHEET NO. 1
DOFO
A.2.3

REST ROOM NOTES:

- DIMENSIONS FOR REST ROOM FIXTURES AND EQUIPMENT ARE FROM FINISH WALL.
- THE REST ROOM LAYOUTS ARE DESIGNED TO MEET A.D.A. REQUIREMENTS FOR ACCESSIBILITY. ANY DISCREPANCY OF CHANGE IN THE LAYOUT MUST BE BROUGHT TO THE ATTENTION OF THE ARCHITECT OR AN OWNER REPRESENTATIVE.
- DETAIL PLAN OF REST ROOMS REPRESENTS LOCATION(S) OF REQUIRED ACCESSORIES. ACCESSORIES ARE TO BE PROVIDED AND INSTALLED BY THE GENERAL CONTRACTOR.
- UNLESS NOTED OTHERWISE, ACCESSORIES WITH SCREWS OR BOLTS PROVIDE STAINLESS STEEL FINISH FOR ALL RESTROOM ACCESSORIES.
- EXPENDING VALVES SHALL BE PROVIDED FOR ALL RESTROOMS.
- ALL PIPES BELOW ACCESSIBLE LAVATORIES TO BE WRAPPED WITH INSULATION.
- FOR EQUIPMENT SPECIFICATIONS REFER TO SHEET 01.16.
- IF THE REST ROOM IS TO BE SUBSTITUTED UPON APPROVAL AS SPECIFIED ON TITLE SHEET NOTES, THE CONTRACTOR SHALL SUBMIT TO ARCHITECT AND OWNER CUT-SHEET OF ALL RESTROOMS PARTITIONS WALLS HARDWARES AND DOORS FOR APPROVAL PRIOR OF INSTALLATION.
- THE FINISH SHALL BE FINISH 5 MINIMUM COVER BASE.

KEYED NOTES:

- GENERAL CONTRACTOR TO PROVIDE BLOCKING FOR RESTROOM ACCESSORIES AS REQUIRED BY MANUFACTURER. DASHED LINES ON ELEVATIONS REPRESENT APPROXIMATE LOCATION OF BLOCKING.
- 2x4 LEDGER
- 1 1/2" PARTITION WITH PLASTIC LAMINATE FINISH
- ELECTRICAL EQUIPMENT REFER TO ELECTRICAL SHEETS
- CLEAR PLASTIC CORNER GUARDS
- PLASTIC PROTECTIVE GUARD
- SANITARY CENOTITE. REFER TO PLUMBING SHEETS

INTERIOR PAINTS

- P-1 COLOR: ZOLATONE MULTI-COLOR PAINT
43-3084GD (SOLVENT BASE) OR 45-7175C (WATER BASE)
CONTACT: DAVID STRAUSS AND ASSOC. AT (770) 864-7732
- P-2 COLOR: SHERWIN WILLIAMS "SAND" (SW2059)
FINISH: SEMI-GLOSS
- P-3 NOT USED
- P-4 FINISH: SHERWIN WILLIAMS "PURE WHITE" (SW1004)
COLOR: SEMI-GLOSS

SUBSTRATE

- GB-1 TYPE: 5/8" GYPSUM BOARD
- GB-2 TYPE: 5/8" WATER-RESISTANT GYPSUM BOARD
- PL-1 TYPE: 5/8" PLYWOOD
- PL-2 TYPE: 5/8" MDO PLYWOOD

WALL FINISH

- WALL PAPER
- WP-1 COLOR: #8679
CONTACT: ROSS INTERNATIONAL (800) 888-2276
- 4-C PRINTED GRAPHIC FILM
- VG-1 COLOR: CUSTOM GRAPHIC
BY: GRADY MCCALEY

NOTE: PRIME AND PAINT GYPSUM BOARD ONE COAT SEMI GLOSS PAINT PRIOR TO INSTALLATION OF GRAPHICS. PROVIDE CLEAR PLASTIC CORNER GUARDS AT EDGES BELOW 6'-0"

FIBER REINFORCED PANEL

FRP-1 COLOR: WHITE
BY: KEMULITE (85) OR MARLITE (FRP 5100S)

FRP-2 TYPE: DISPLAYWALL 6000 (DWE415) FROST WHITE
INSERT: 9101 MILL FINISH
BY: MARLITE

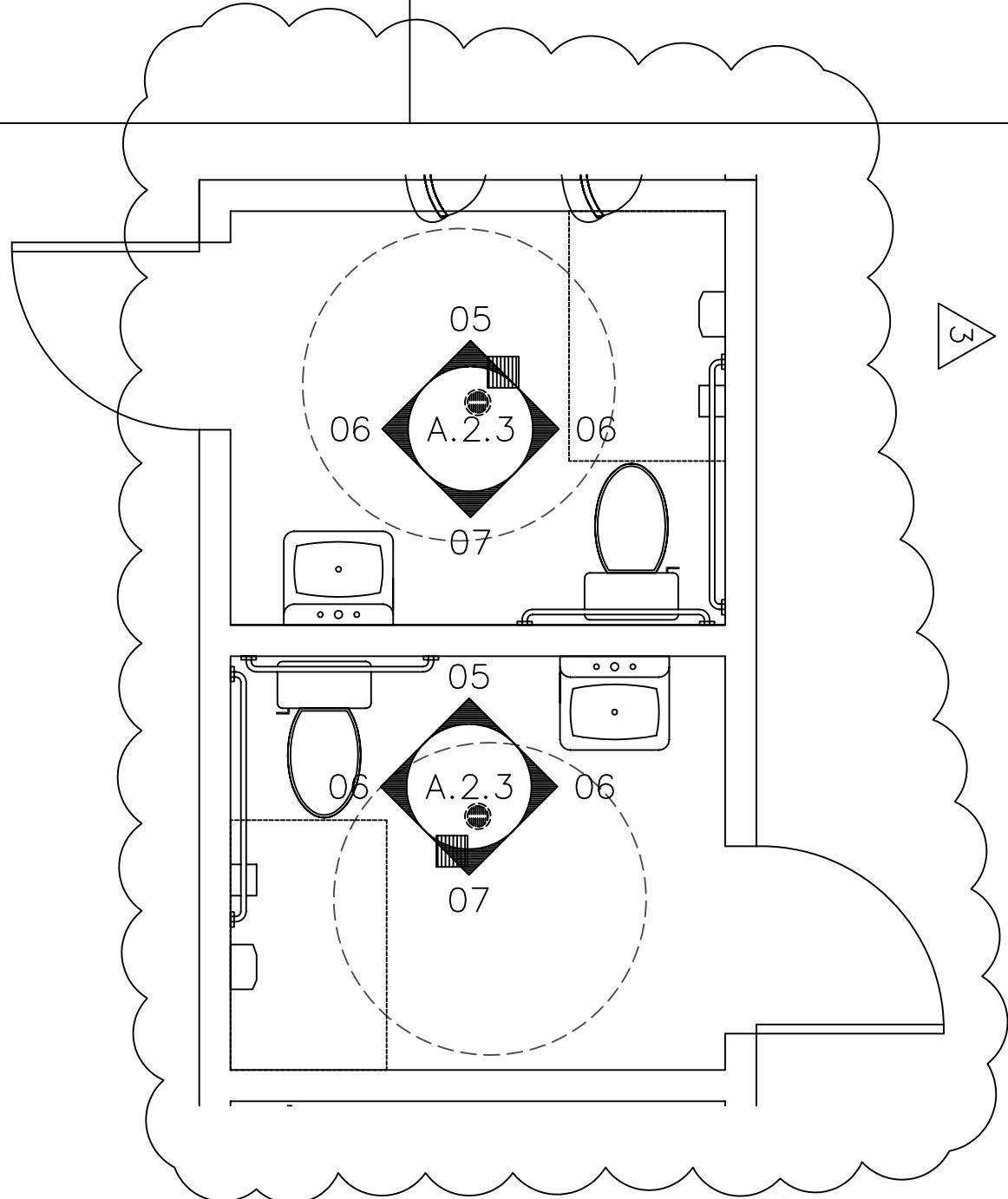
- WALL BASE
- WB-1 COLOR: 772 "CHAMPAGNE"
SIZE: 1/8"x4" COVE BASE
- WB-2 OTHER LOCATIONS: GONDOLAS AND MILLWORK
COLOR: "IVANCO" (DND1)
BY: DALTILE SIZE: 6"x12" COVE BASE
GROUT: 1/4" SAND (96) BY MAPEI
- WB-3 COLOR: "RED SUPERTEAD" (0081)
BY: DALTILE SIZE: 6"x6" COVE BASE
GROUT: 1/4" GRAY (09) BY MAPEI

- CERAMIC WALL TILE
- WT-1 COLOR: SEMI-GLOSS ALMOND (K165) —
BY: DALTILE SIZE: 6"x6" —
- WT-2 COLOR: SEMI-GLOSS NAVY (K469) —
BY: DALTILE SIZE: 6"x6" —
- WT-3 COLOR: SEMI-GLOSS MEXICAN SAND (K-174) —
BY: DALTILE SIZE: 6"x6" —
- WT-4 COLOR: SEMI-GLOSS VERMILION (DW-1) —
BY: DALTILE SIZE: 6"x6" —
- WT-5 COLOR: SEMI-GLOSS MUSTARD (DW-12) —
BY: DALTILE SIZE: 6"x6" —
- GROUT: 1/4" WHITE (00) BY MAPEI

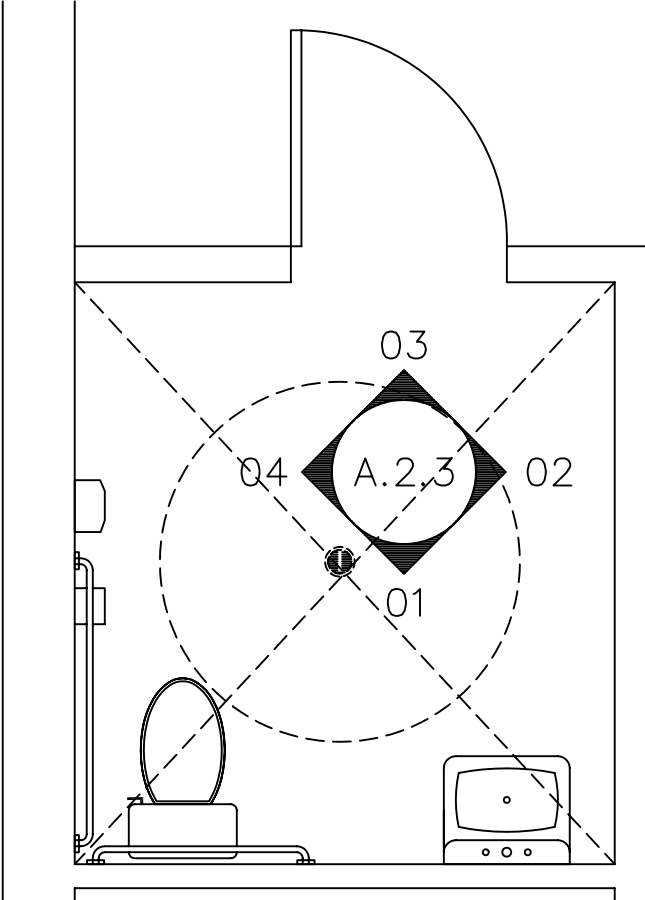
RESTROOM ACCESSORIES

MARK	QTY	ITEM	MANUF.	ID. #	DESCRIPTION
A	2	TOILET PAPER DISP.	BOGORICK	#P-6657	SINGLE ROLL (SURFACE MOUNT), SATIN FINISH
B	2	MIRROR	BOGORICK	#P-165	18X30 STAINLESS STEEL FRAMED MIRROR
C	2	UTILITY HOOK	BOGORICK	#P-6707	SATIN FINISH STAINLESS STEEL
D	4	GRAB BAR	BOGORICK	#P-6606	1 1/2" DIA. CONCEALED MOUNTING, SATIN FINISH
E	2	SOAP DISPENSER	BOGORICK	#P-2111	WALL MOUNTED, SATIN FINISH, STAINLESS STEEL CONTAINER VANDAL-RESISTANT LD. STAINLESS STEEL LATHER VALVE. CAPACITY: 40 FL. OZ
F	1	SANIT. MARKIN DISP.	BOGORICK	#P-270	
G	2	PAPER TOWEL DISP. / WASTE RECEPTACLE	BOGORICK	#P-3444	RECESSED COMBINATION PAPER TOWEL DISPENSER AND WASTE RECEPTACLE
H	2	STATION	KOALA		VERTICAL SURFACE MOUNTED STANDARD COLOR

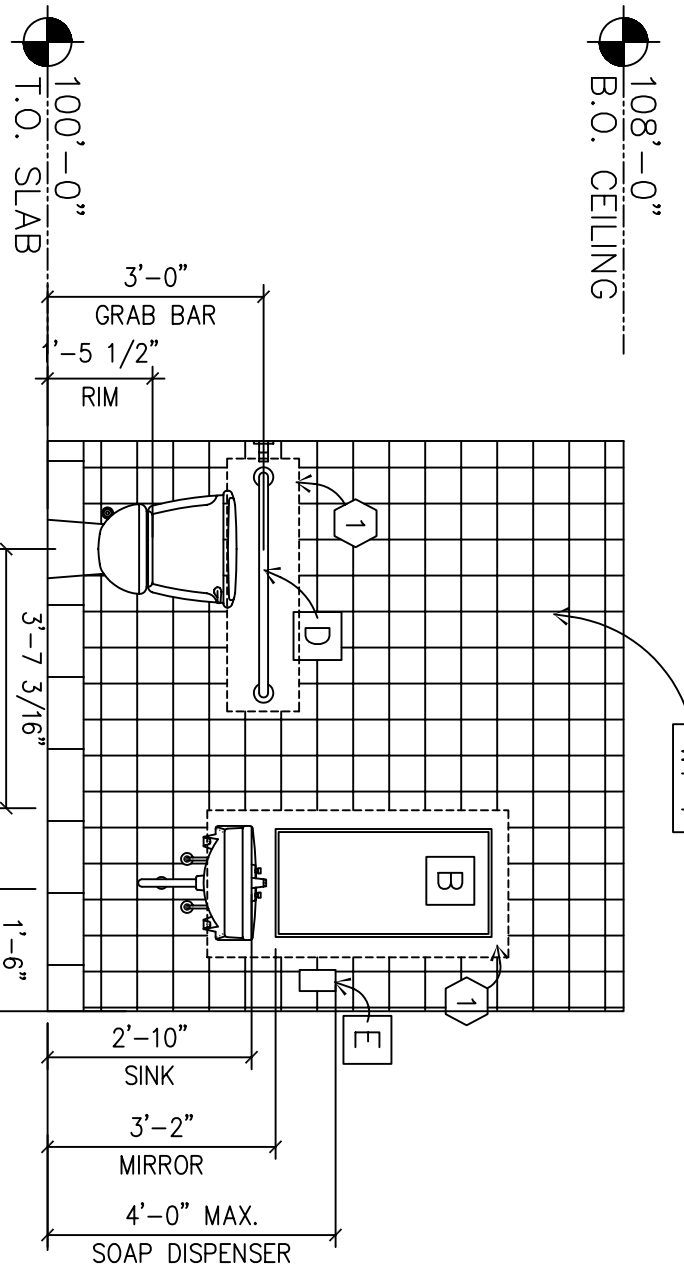
EMPLOYEES RESTROOM



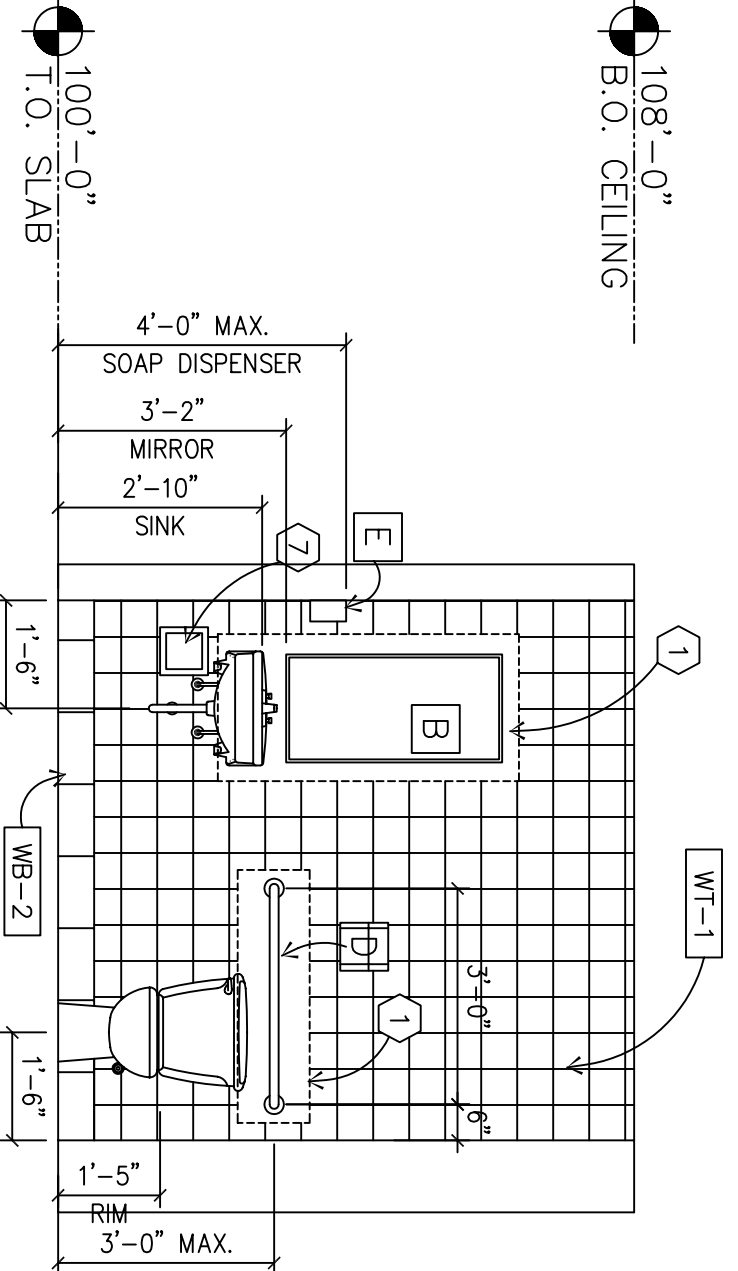
UNISEX RESTROOM



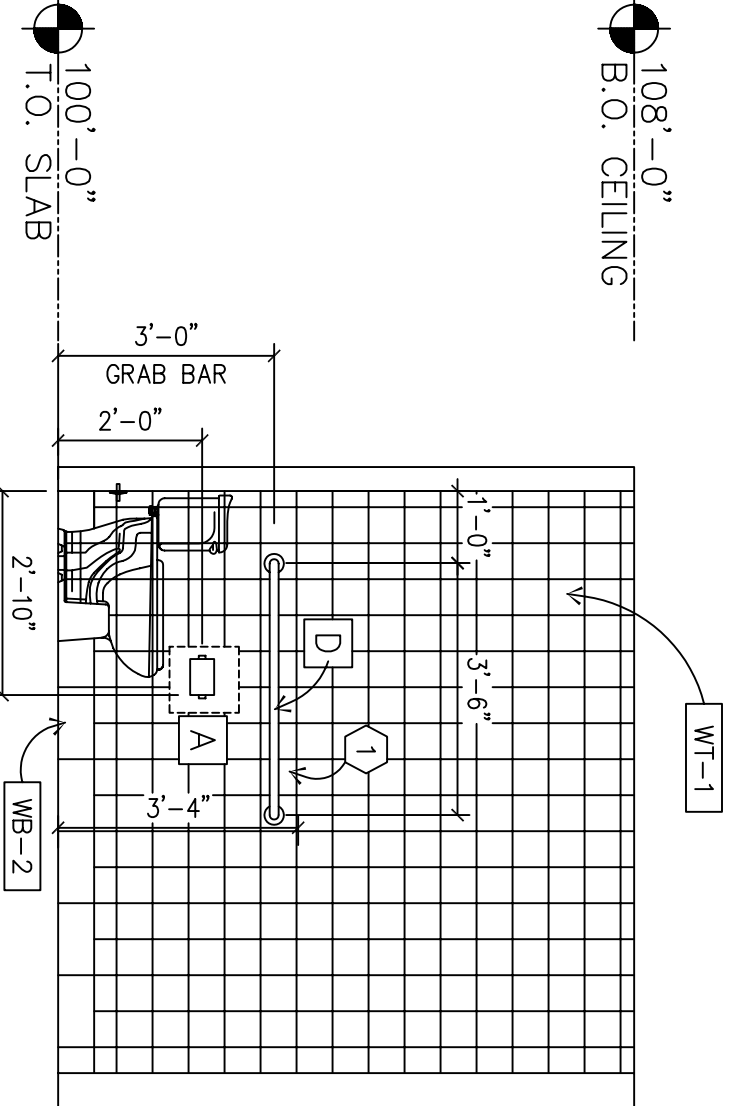
EMPLOYEES TOILET



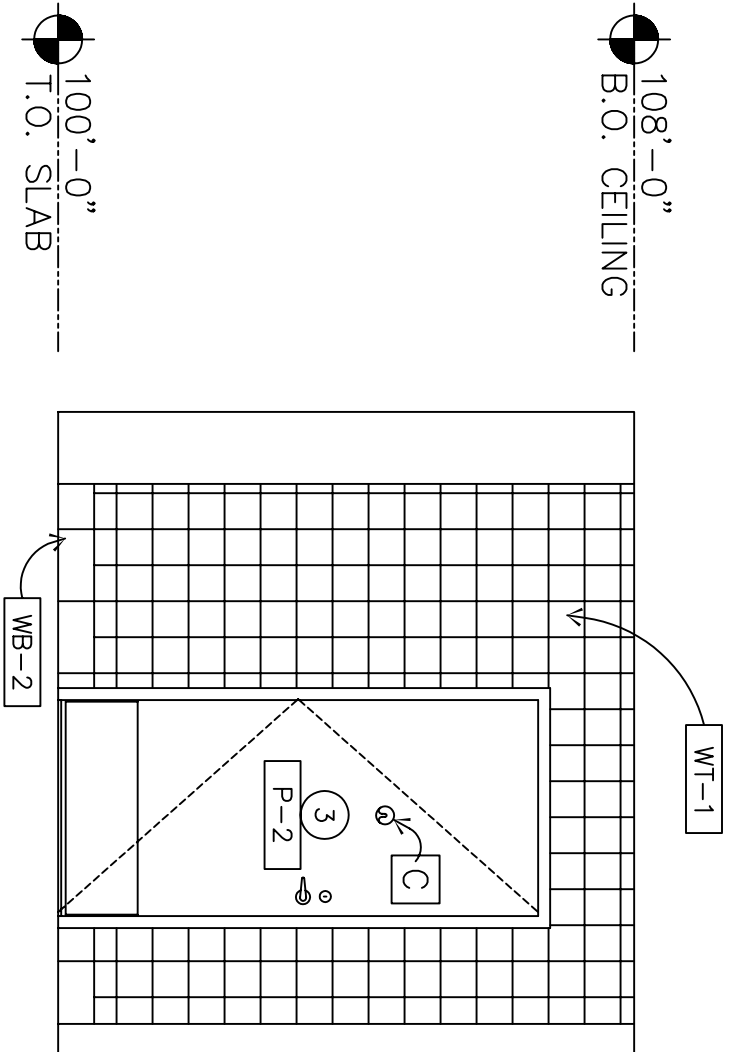
EMPLOYEES TOILET



UNISEX RESTROOM



UNISEX RESTROOM



UNISEX RESTROOM

UNISEX RESTROOM

NOTE: CONTRACTOR SHALL PREPARE AND FURNISH SHOP DRAWINGS FOR BATHROOM PARTITIONS BEFORE CONSTRUCTION.